

For over a century much of the short-paid first-class domestic mail in the United States was not sent with postage due to be collected upon delivery, as was the practice in many countries, but instead was held at the post office of origin until the addressee supplied sufficient stamps to pay the deficient postage. This practice began shortly after the adoption of compulsory prepayment of postage in 1855 and continued with one exception, until July 1, 1958.<sup>1,10</sup> The Post Office made a distinction between mail on which at least one full ounce had been paid at the letter rate and mail which was completely unpaid, or paid less than one full ounce at the current letter rate. The well-known "Due" markings, which are not the subject of this article, were only applied to overweight mail on which the first ounce had been fully prepaid, or unpaid mail that had escaped detection until it reached the destination post office. It is the mail completely unpaid, such as the 1889 letter from Oakland to Coloma, Eldorado Co., California, or paid less than 1 full ounce that is the subject of this article.

Figure 1

Such mail, for which the sender could not be identified, without opening, was held at the post office of origin while the addressee was notified of the deficiency (except for the period 1863-1882). When the missing postage was supplied, the letter was forwarded to the addressee. If the missing postage was not provided in a timely manner, the mail was forwarded to the Dead Letter Office. Exceptions were made to this rule so that mail from soldiers serving outside the U.S. who did not have the franking privilege (such as during the Spanish-American War) and mail from victims of the 1906 San Francisco Earthquake would not be subjected to holding.

Mail with a return address, or other evidence to identify the sender, was returned to have the postage added by the sender. (These have their own set of "Returned for postage" auxiliary markings which could be the subject of an article for someone else.)

The Held for Postage procedures resulted in a penalty of double postage (first-class postage had to be used to send the postage which was short-paid) and several days delay in receiving one's mail. As the addressee was never told any details

about the letter being held, curiosity would encourage them to pay for the letter. This cumbersome and inefficient process not only delayed delivery of the mail while writing to the addressee and waiting for stamps to be sent, it also placed a clerical burden on the post office, having to file letters being held in such a way that they could be easily matched with postage when it was sent. Postmaster General John Wanamaker, in his drive to operate the Post Office in a more business-like fashion, attempted unsuccessfully to abolish the Held for Postage rules in 1892.<sup>2</sup>

In 1855, following the adoption of compulsory prepayment of postage, postmasters were instructed to send all unpaid and short-paid mail to the Dead Letter Office in Washington, D.C. When the volume of unpaid mail overwhelmed the Dead Letter Office, the Post Office Department realized that local postmasters could handle much of this postage collection business more efficiently. Auxiliary Held for Postage markings are known as early as 1856, and Post Office forms, sent as free-franked letters, requesting postage from an addressee are known by 1857.<sup>3</sup> From July 1, 1863, until 1879, the initial procedures grew more restrictive with no notice being sent to the addressee; by 1879 the *Postal Laws & Regulations* limited Held for Postage notification only to mail addressed within the local delivery area, with all other short-paid mail being sent immediately to the Dead Letter Office.<sup>4</sup> These facts would perhaps account for the smaller number of such covers and markings recorded in the 1870's.

Held for Postage covers and auxiliary markings became more common after 1882 when penalty imprint postal cards (Form 1543) were introduced at carrier post offices to notify an addressee that mail was being held for them. By 1886, Held for Postage notification cards were in use at all post offices.<sup>5</sup> The growing use of return addresses in the late 19th century, on both business and personal mail, generally favored Returned for Postage over Held for Postage markings. However, an upsurge in Held for Postage mail coincided with the "Golden Age" of postcards, from their acceptance in 1898 through World War I. Since post cards typically do not have a return address, they are prime candidates to be held for postage if unpaid or short paid. Violating one of the unique post card rules, such as writing across the centerline, turns a properly paid post card into a Held

for Postage letter from the prospective of postal regulations.

The notification cards, which were similar to postal cards and bore a penalty imprint, instructed the addressee to send proper postage loose in an envelope along with the notification card to the post office holding the mail. Because they were to be returned, the notification cards could have the same file number auxiliary markings as the mail being held. At some point, the Held for Postage card, originally Form 1543, was changed to Form 3548. A similar Form 3540 notified a sender that undeliverable 2nd, 3rd, or 4th class mail was being held pending the receipt of postage to cover its return.<sup>6</sup>

Since several collectors have written about the early Held for Postage markings, or included them in larger works,<sup>7</sup> I will leave that discussion to others except to note that some pre-1882 markings continued to be used into the 20th century. The greater volume of Held for Postage mail after 1882 produced a variety of new markings. Regulations for using the four types of auxiliary markings associated with Held for Postage mail after 1882 are discussed below with reference to the 1889 Oakland cover above. I have not seen a cover displaying all four of the markings. While Gough believes the Post Office supplied the initial Held for Postage handstamps in the 1850's, this practice appears to have ceased before 1882. The variety of styles found on covers and the regular advertisements for postal handstamps in publications such as the *U.S. Official Postal Guide* clearly suggest multiple sources of supply for these auxiliary markings.<sup>8</sup> However, by 1909 the Post Office Department was back in the business of supplying auxiliary handstamps.<sup>9</sup>

## Held for Postage

After a letter without postage was postmarked (the August 8 duplex in the upper right corner of the Oakland cover), the "Held for Postage" marking was applied, a notice was sent to the addressee, and the letter was filed pending the receipt of proper postage. When the postage was supplied by the addressee, it was to be applied over the "Held for Postage" marking and then properly cancelled (the August 13 duplex tying the 2¢ green Banknote). Since they were intended to be covered, com

DS =0, K=2, LP = LP, ASW = ASW, NAS

= Not actual size. S = Simpson's

## Held for Postage Auxiliary Markings

A Preliminary Catalog of  
Handstamps & Manuscript  
Markings, 1882-1958

### I. Held for Postage

A. Pre-1882 Stock markings still in use:



Double ribbon (1858-1909) - Cities reported after 1882:

- Boston, MA 1859-62<sup>MB, S</sup>
- Philadelphia, PA 1860-1932<sup>?TC</sup>
- Pittsburgh, PA 1870-17<sup>ML, ASW</sup>
- New York, NY 1880<sup>ASW</sup>
- Providence, RI 1883<sup>DS</sup>
- Braiden, FL 1885<sup>DS</sup>
- Peoria, IL 1887-09<sup>JM, LP, ASW</sup>
- Cleveland, OH 1890-07<sup>DS, ASW</sup>
- Bloomington, IN 1890<sup>DS</sup>
- Fort Wayne, IN 1892<sup>ASW</sup>
- Kewanee, IL 1892<sup>ASW</sup>
- Buffalo, NY 1905<sup>ASW</sup>
- Harrisburg, PA 1905-31<sup>ASW</sup>  
(single ribbon)
- Salt Lake City, UT 1909<sup>JM + LP</sup>
- Flint, MI 1910<sup>ASW</sup>



Small oval (1861-1895):

- Philadelphia, PA 1865-1928<sup>?TC</sup>
- Boston, MA 1867<sup>MB</sup>
- Piqua, OH 1887<sup>JM, LP</sup>
- Lafayette, IN 1895<sup>DS</sup>
- Fall River, MA 1906<sup>ASW</sup>
- Fitchburg, MA 1908<sup>ML</sup>



Circle (1850's - 1886) - Cities reported after 1882: <sup>DS, (NAS)</sup>

- Philadelphia, PA 1886 (also, see below)
- Boston<sup>JM, LP</sup>

B. Stock markings offered in U.S. Official Postal Guide advertisements, 1874-1893:

## Held for Postage.

Offered in 1887 by E.S. Miller of Newark, Ohio as part of a \$2.00 package that included dater, canceler, ink, pads, and "15 line stamps." Cities Reported: None<sup>DS (NAS)</sup>



John Goldsborough, of Philadelphia, advertised regularly. Cities reported: None<sup>DS (NAS)</sup>

C. Stock Markings supplied by the Post Office Supply Division, 1909-1958:

The 1909-1932 supply catalogs list the text as having only an initial capital letter. While I have not yet seen an example, I would expect it to resemble:

Held for postage.

D. Stock Markings, source not yet known:



Cities reported:  
Oakland, CA 1889<sup>DS (NAS)</sup>



Cities reported:  
Brooklyn, NY 1889-92<sup>DS (NAS), ASW</sup>



Cities reported:  
Washington, DC 1876<sup>asw</sup>

E. Markings unique to a particular city:

Postmasters may have acquired these locally, ordered them by mail, or in the case of large cities after 1909 had them custom-made by the Post Office Supply Division.

**Boston, Massachusetts**



1882-1907<sup>ASW</sup>

**Catskill, New York**

"Held for Postage / Aug 8 1905 / Catskill, N.Y." (Milgram cover #17)

**Homer, NY**



1884<sup>ML</sup>

**Chicago, Illinois**



1859<sup>LP</sup>



1883-1895<sup>LP</sup>



1903<sup>LP</sup>

**Held for Postage.**  
**I. D. CHICAGO, ILL.**

1905-1906<sup>LP</sup>



1908<sup>LP</sup>

**Held for Postage**

**JUN 23 1915**

Cities reported: Chicago, IL 1915<sup>LP</sup>

**AUG 27 1917**

**HELD FOR POSTAGE**

Cities reported: Chicago, IL 1917<sup>LP</sup>

**HELD FOR POSTAGE**

**SEP 27 1923**

Cities reported: Chicago, IL 1923<sup>LP</sup>

**HELD FOR POSTAGE**  
**JUN 27 1931**

Cities reported: Chicago, IL 1931<sup>LP</sup>

**HELD FOR POSTAGE**  
**MAY 26 1933**

Cities reported: Chicago, IL 1933<sup>LP</sup>

**HELD FOR POSTAGE**  
**AUG 2 1952**

Cities reported: Chicago, IL 1952<sup>LP</sup>

**HELD FOR POSTAGE**  
**Forgn. Sec. 1**

1933<sup>LP</sup>

**HELD FOR POSTAGE**  
**Forgn. Sec. 1**

Cities reported: Chicago, IL 1933<sup>LP</sup>

**HELD FOR POSTAGE**  
**FO SEC. 2**

Cities reported: Chicago, IL 1933<sup>LP</sup>

**Cincinnati, Ohio**



Cincinnati, OH 1906<sup>ASW</sup>

**Mechanicsville New York**

*This letter was held for postage at Mechanicsville, N. Y.*

Mechanicsville, NY 1906<sup>ASW</sup>

**Indianapolis, Indiana<sup>DS (NAS)</sup>**

**HELD FOR POSTAGE**  
**JAN 30 1900**  
**POST OFFICE,**  
**INDIANAPOLIS, IND.**

**HELD FOR POSTAGE**

**FEB 12, 1907**

Indianapolis, Ind.

**New Haven, CT**

**HELD FOR POSTAGE**  
1859

**New York, New York<sup>S</sup>**

**Held For Postage**

Circa 1855-59<sup>S</sup>



Circa 1870-80<sup>ASW</sup>



New York, NY 2nd DIV., 1906<sup>ASW</sup>



New York, NY 3rd DIV., 1???<sup>ASW</sup>

1886-1894, with letters representing the New York Post Office branches. Other letters reported: A. Milgram reports a similar circle with Division numbers in the center: "3D DIV" and "4th DIV" used 1881-1885. (Milgram covers #5 #45)



1903-1906, with letters representing the New York Post Office branches. Other letters reported: X.



1906, with letter representing the New York Post Office branch.<sup>ASW</sup>

**HFP1906<sup>2</sup>** “MADISON SQUARE (in center of circle)”



New York City 1906<sup>TB</sup>



New York City 1909<sup>ASW</sup>



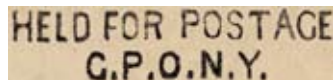
1919-1928 ovals with names of New York Post Office branches.<sup>ASW</sup>

**HFP1910** “HELD FOR POSTAGE / (N.Y.P....)”



New York City 1910<sup>TB</sup>

**HFP1921<sup>2</sup>** “HELD FOR POSTAGE / G.P.O.N.Y.”<sup>ASW</sup>



New York City 1921<sup>ASW</sup>



New York City 1928<sup>ASW</sup>



Milwaukee, WI 1904<sup>ASW</sup>

**Newton, Kansas**

“Held for postage, NEWTON, KAN.,” used in 1921. (Milgram cover #19)



Oakland, CA 1908<sup>ASW</sup>

**Philadelphia Pennsylvania**

**HELD FOR POSTAGE**

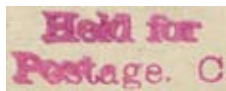
Philadelphia, PA 1855?<sup>TC</sup>



Philadelphia, PA 1884-94<sup>TC</sup>

**Held for Postage.**

Philadelphia, PA 1904<sup>TC</sup>



Philadelphia, PA 1906<sup>TC</sup>

**San Francisco, California**

*Detained at San Francisco for POSTAGE.*

1889<sup>DS</sup>

**HFP1950<sup>2</sup>** “DCDS: “SAN FRANCISCO, CAL / HELD FOR POSTAGE”



San Francisco, CA 1950<sup>TB</sup>

**Washington, D.C.**



1908-18, with manuscript File Number<sup>DS</sup>.<sup>ASW</sup>

**E. Generic markings used or probably used in multiple cities:**

Postmasters may have ordered them by mail, or in the case of large cities after 1909 had them made by the Post Office Supply Division.

### HELD FOR POSTAGE.

Cities reported:  
Waukesha, WI 1887<sup>ASW</sup>  
Lincoln, NE 1910<sup>DS</sup>  
Wallawalla, WA 1911<sup>ASW</sup>  
Oshkosh, WI 1912<sup>ASW</sup>  
New Haven, Conn 1914<sup>ASW</sup>  
Rochester, NY 1914<sup>ASW</sup>

### HELD FOR POSTAGE

Cities reported:  
Oswego, NY 1888<sup>ASW</sup>  
Providence, RI 1899<sup>DS, ASW</sup>  
Springfield, IL 1899<sup>ASW</sup>  
Portland, OR 1902-1910<sup>DS, ASW</sup>  
Syracuse, NY 1903-6<sup>ASW</sup>  
Wilmington, OH 1907<sup>ASW</sup>  
Boston, MA 1907<sup>ASW</sup>  
Columbus, OH 1909-10<sup>ASW</sup>  
Toledo, OH 1911<sup>ASW</sup>  
Cleveland, OH 1911<sup>ASW</sup>

### Held for Postage.

From a similar 1887 offer by F. P. Hammond of Aurora, Illinois.

Cities Reported:  
Cedar Rapids, Iowa 1907<sup>DS (NAS)</sup>  
Mankato, Kansas 1908<sup>DS (NAS)</sup>

### HELD FOR POSTAGE

Cities reported:  
Springfield, IL 1899<sup>ASW</sup>

### HELD FOR POSTAGE

Cities reported:  
Woonsocket, RI 1900<sup>ASW</sup>

### Held for Postage.

Cities reported:  
Elizabeth, NJ 1902<sup>ASW</sup>  
Shreveport, LA 1905<sup>ASW</sup>  
Philadelphia, PA, 1906<sup>TC</sup>  
Eloora, IA, 1907<sup>ASW</sup>  
Columbus, OH 1909<sup>ASW</sup>  
Tiffin, OH 1909<sup>ASW</sup>  
Wallawalla, WA 1910<sup>ASW</sup>  
Bowling Green, OH 1921<sup>ASW</sup>

### Held for Postage.

Cities reported:  
Denver, CO 1904<sup>ASW</sup>  
Manchester, NH 1905<sup>ASW</sup>

### HELD FOR POSTAGE

Cities reported:  
Concord, NH 1905<sup>ASW</sup>

### HELD FOR POSTAGE

Cities reported:  
Dover, NH 1905<sup>ASW</sup>

### HELD FOR POSTAGE

Cities reported:  
Manchester, MA 1904<sup>ASW</sup>  
Laconia, NH 1905<sup>ASW</sup>  
Tacoma, WA 1907<sup>ASW</sup>  
McKeesport, PA 1911<sup>ASW</sup>  
Wheeling, WV 1913<sup>ASW</sup>

### HELD FOR POSTAGE

Cities reported:  
Camden, NJ 1906<sup>ASW</sup>

### HELD FOR POSTAGE

Cities reported:  
Columbus, OH 1906<sup>ASW</sup>  
Salt lake City, UT 1907<sup>ASW</sup>

### HELD FOR POSTAGE.

Cities reported:  
Saratoga, NY 1906<sup>ASW</sup>

JUN 2 - 1906

### Held For Postage,

Cities reported:  
New Haven, CT 1906<sup>DS</sup>  
Cheyenne, MY 1907<sup>ASW</sup>

### HELD FOR POSTAGE

Cities reported:  
Burlington, WI 1906<sup>ASW</sup>

### Held for Postage.

Cities reported:  
Boone, IA 1906<sup>ASW</sup>  
East Las Vegas, NV 1906<sup>ASW</sup>  
Hubbard, OH 1908<sup>ASW</sup>  
Kansas City, MO 1909<sup>ASW</sup>  
Wellington, KS 1910<sup>ASW</sup>

### Held for Postage

Cities reported:  
Goshen, IN 1906<sup>ASW</sup>  
Miami, FL 1917<sup>ASW</sup>  
Elmira, NY 1920<sup>ASW</sup>  
El Paso, TX 1924<sup>ASW</sup>  
Salt Lake City, UT 1925<sup>ASW</sup>  
Portland, OR 1926<sup>ASW</sup>  
Denver, CO 1929<sup>ASW</sup>  
Ogden, UT 1929<sup>ASW</sup>  
St Augustine, FL 1936<sup>DS</sup>  
Visalia, CA 1937<sup>ASW</sup>



Cities reported:  
Lewiston, ID 1906<sup>ASW</sup>  
Hillsboro, NH 1911-34<sup>ASW</sup>

### Held for Postage

Cities reported:  
Seattle, WA 1907<sup>ASW</sup>

### Held for Postage

Cities reported:  
Bryan, OH 1907<sup>ASW</sup>

## Held for Postage.

Cities reported:  
 San Francisco, CA, 1907-12<sup>ASW</sup>  
 Providence, RI, circa 1908<sup>ASW</sup>  
 Honolulu, HI 1908<sup>ASW</sup>  
 Springfield, OH 1908<sup>ASW</sup>  
 Webster, OH 1910<sup>ASW</sup>  
 Freeport, IL 1910<sup>ASW</sup>  
 Albany, NY 1911<sup>ASW</sup>  
 Norfolk, VA 1911<sup>ASW</sup>  
 Portland, ME 1915<sup>ASW</sup>

## Held For Postage

Cities reported:  
 Cleveland, OH 19??<sup>ASW</sup>

## HELD FOR POSTAGE.

Cities reported:  
 D???, IL 1908<sup>ASW</sup>

## HELD FOR POSTAGE

Cities reported:  
 Almena, WI 1908<sup>ASW</sup>

## HELD FOR POSTAGE

Cities reported:  
 Lowell, MA 1908<sup>ASW</sup>

## HELD FOR POSTAGE

Cities reported:  
 Salem, OR 1908<sup>ASW</sup>

## HELD FOR POSTAGE.

Cities reported:  
 Carrington, ND 1908<sup>ASW</sup>

## Held for Postage.

Cities reported:  
 San Francisco, CA, 1907-12<sup>ASW</sup>  
 Providence, RI, circa 1908<sup>ASW</sup>  
 Honolulu, HI 1908<sup>ASW</sup>  
 Springfield, OH 1908<sup>ASW</sup>  
 Webster, OH 1910<sup>ASW</sup>  
 Freeport, IL 1910<sup>ASW</sup>  
 Albany, NY 1911<sup>ASW</sup>  
 Norfolk, VA 1911<sup>ASW</sup>  
 Portland, ME 1915<sup>ASW</sup>

## HELD FOR POSTAGE

Cities reported:  
 Ogden, UT 1908<sup>ASW</sup>  
 Denver, CO 1909<sup>ASW</sup>  
 Fredonia, NY 1911<sup>ASW</sup>  
 Trenton, NJ 1919<sup>ASW</sup>  
 Tacoma, WA 1920<sup>ASW</sup>  
 Brookville, IN 1922<sup>ASW</sup>

## HELD FOR POSTAGE

Cities reported:  
 Boulder, CO 1909<sup>ASW</sup>  
 Lock Haven, PA 1909<sup>ASW</sup>  
 Cokato, MN 1914<sup>ASW</sup>

## HELD FOR POSTAGE.

Cities reported:  
 Ostrander, OH 1910<sup>ASW</sup>

## HELD FOR POSTAGE

Cities reported:  
 Columbus, OH circa 1910<sup>ASW</sup>  
 Mexico, MO 1911<sup>ASW</sup>  
 Brooklyn, NY 1914-21<sup>ASW</sup>  
 Berkeley, CA 1916<sup>ASW</sup>  
 Commerce, TX, 1932<sup>ML</sup>  
 San Francisco, CA 1938<sup>ASW</sup>

## HELD FOR POSTAGE

Cities reported:  
 Manitowoc, WI 1911<sup>ASW</sup>  
 Bristol, PA 1918<sup>ASW</sup>

## HELD FOR POSTAGE

Cities reported:  
 San Jose, CA 1913<sup>ASW</sup>

## Held for Postage

Cities reported:  
 Waynesburg, PA 1913<sup>ASW</sup>

## Held for Postage

Cities reported:  
 Clarksburg, MO 1919<sup>ASW</sup>

## Held for Postage

Cities reported:  
 Norfolk, VA 1920<sup>ASW</sup>

## Held for Postage

Cities reported:  
 Denver, CO 1929<sup>ASW</sup>

## Held for Postage.

Cities reported:  
 Hammond, IN 1938<sup>ASW</sup>

**HFP1934<sup>2</sup>** "Held for postage / AUG 28 1934 / Addressee notified"



Jersey City, NJ 1934<sup>TB</sup>

## HELD FOR POSTAGE

Cities reported:  
 Springfield, IL 1933<sup>ASW</sup>  
 Racine, WI 1934<sup>ASW</sup>  
 New York, NY 1937<sup>ASW</sup>  
 Portland, OR 1938-56<sup>ASW</sup>  
 Raleigh, NC 1939<sup>ASW</sup>  
 Lansing, MI 1939<sup>ASW</sup>  
 Milwaukee, WI 1940<sup>ASW</sup>  
 Tacoma, WA 1941<sup>ASW</sup>  
 Kansas City, MO 1944<sup>ASW</sup>  
 Olympia, WA 1953<sup>?</sup>  
 Hayward, CA 1955<sup>ASW</sup>

## HELD FOR POSTAGE

Cities reported:  
New York, 1935-6<sup>DS, ASW</sup>

## HELD FOR POSTAGE

Cities reported:  
Louisville, KY 1940<sup>ASW</sup>  
Hempstead, NY 1941<sup>ASW</sup>

## HELD FOR POSTAGE

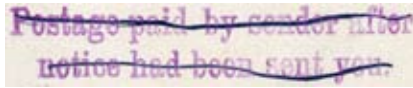
Cities reported:  
Amsterdam, NY 1942<sup>ASW</sup>

### **HFP1955<sup>2</sup>**“HELD FOR POSTAGE

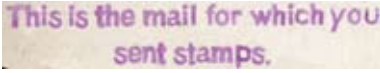


Cities reported:  
Daytona Beach, FL 1955<sup>TB</sup>

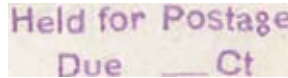
Miscellaneous



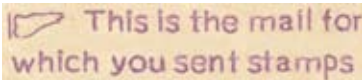
Cities reported:  
Providence, RI circa 1908<sup>ASW</sup>



Cities reported:  
Providence, RI circa 1908<sup>ASW</sup>



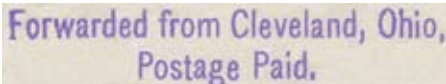
Cities reported:  
Providence, RI circa 1908<sup>ASW</sup>



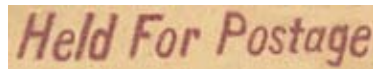
Cities reported:  
Nashua, NH 1907<sup>ASW</sup>



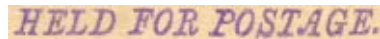
Cities reported:  
Lincoln, NB 1908<sup>ASW</sup>



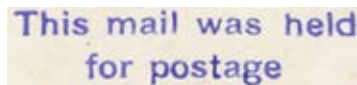
Cities reported:  
Cleveland, OH 1909<sup>ASW</sup>



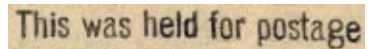
Cities reported:  
Cleveland, OH 19??<sup>ASW</sup>



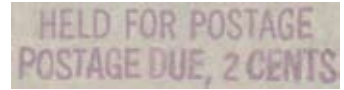
Cities reported:  
D???, IL 1908<sup>ASW</sup>



Cities reported:  
St. Paul, MN 1909<sup>ASW</sup>



Cities reported:  
Minneapolis, MN 1914-5<sup>ASW</sup>



Cities reported:  
Louisville, KY 1944<sup>ASW</sup>



Cities reported:  
Cleveland, OH 1945<sup>ASW</sup>

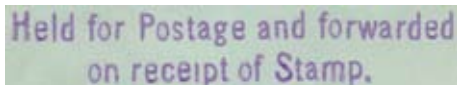


Cities reported:  
Akron, OH 1956<sup>ASW</sup>

## Held For Postage Plus (HFP+)

E. Generic markings used or probably used in multiple cities:

Postmasters may have ordered them by mail, or in the case of large cities after 1909 had them made by the Post Office Supply Division.



Cities reported:  
Brooklyn, NY 1892<sup>ASW</sup>

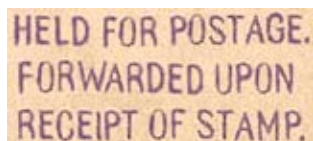


Text: "Held for postage and forwarded on receipt of stamp.

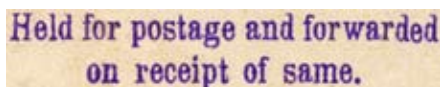
Cities reported:  
Brooklyn, NY 1898<sup>DS</sup>  
Cedar Rapids, IA 1907<sup>DS</sup>

"Held for Postage and Forwarded / upon Receipt of \_\_\_\_\_ Cts."  
(Milgram cover #43) Cities reported:  
Danielson, CT, 1903

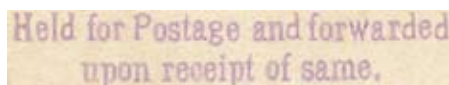
**1904<sup>2</sup>** "HELD FOR POSTAGE / FORWARDED UPON / RECEIPT OF STAMP"



Poughkeepsie, NY 1904<sup>TB</sup>

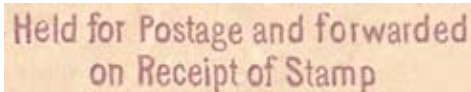


Cities reported:  
Cleveland (a), OH 1904<sup>ASW</sup>  
Lewiston, ID 1906<sup>ASW</sup>

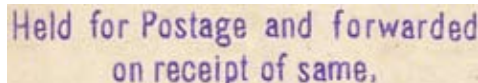


Manchester, NH 1905<sup>ASW</sup>

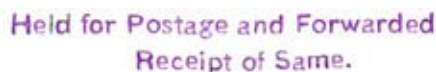
**HFP1906<sup>2</sup>** "Held for Postage and forwarded / on Receipt of Stamp"



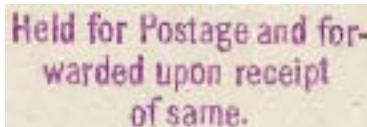
Brooklyn, NY 1906<sup>TB</sup>



Cleveland (b), OH 1906-7<sup>ASW</sup>



Cities reported: Urbana, IL 1911<sup>DS</sup>



Fort Wayne, IN 1912<sup>ASW</sup>



Salt Lake City, UT 1937<sup>ASW</sup>

This is the Mail For Which (TMP)  
You Sent Postage

#### IV. Explanation to Addressee

##### A. Stock Markings supplied by the Post Office Supply Division, 1909-1958:

The 1909-1932 supply catalogs list two markings – one for postage supplied by the addressee, the other for postage supplied by the sender. The text for the addressee marking, with its characteristic initial capital letter, exists in at least two different fonts.

Cities reported: Columbus, OH 1918<sup>DS</sup>

##### B. Custom Markings supplied by the Post Office Supply Division, 1909-1958:

1st and 2nd class post offices were permitted to apply for custom markings. These appear to have been made by the addition of the city name to the stock marking.

Columbus, OH 1906<sup>ASW</sup>

Fremont, OH 1913<sup>DS</sup>

San Jose, CA 1913<sup>ASW</sup>

Springfield, MA 1911<sup>DS, ASW</sup>

##### C. Stock Markings, source not yet known:

“This is the article for which / postage was sent.” (Milgram cover #34) Cities reported: Portland, OR 1902

##### D. Markings unique to a particular city:

Postmasters may have acquired these locally, ordered them by mail, or in the case of large cities after 1909 had them custom-made by the Post Office Supply Division.

##### San Jose, California

1905<sup>DS</sup>

##### E. Generic markings used or probably used in multiple cities:

Postmasters may have ordered them by mail, or in the case of large cities after 1909 had them made by the Post Office Supply Division.

##### Wilmington, Delaware

“Forwarded from Wilmington, Del. / Post Office on receipt of postage.” Used in 1906 (Milgram cover #39)

Cities reported:  
Tiffin, OH 1904<sup>ASW</sup>

Cities reported:  
Denver, CO 1904<sup>ASW</sup>

Cities reported:  
Madrid, IA, 1910<sup>ASW</sup>

Cities reported:  
Asheville, NC, 1905<sup>ASW</sup>

Cities reported:  
Wallawalla, WA, 1910<sup>ASW</sup>  
Albany, NY 1911<sup>ASW</sup>

**TMP1911<sup>2</sup>** “This is the mail for which / you sent Postage”

Cities reported:  
Los Angeles, CA\* 1910-11<sup>ASW</sup>  
Toledo, OH 1911<sup>ASW</sup>  
Seattle, WA 1912<sup>ASW</sup>  
Lebanon, OH 1916<sup>ASW</sup>

Cities reported:  
San Francisco, CA, 1907-11<sup>ASW</sup>  
Toledo, OH 1911<sup>ASW</sup>

**TMP1908<sup>2</sup>** “This is the PARCEL \ LETTER for which / you sent postage”

Brooklyn, NY 1906-8<sup>ASW, TB</sup>

This is the Article for which  
you sent postage.

Honolulu, HI 1908<sup>ASW</sup>

This is the mail for which  
you sent postage

Cities reported:  
Norfolk, VA 1911<sup>ASW</sup>

This is the mail for which  
you sent postage.

Cities reported:  
Zanesville, OH 1908<sup>ASW</sup>  
San Francisco, CA 1917<sup>ASW</sup>  
Brooklyn, NY 1921<sup>ASW</sup>  
Toledo, OH 1921<sup>ASW</sup>

This is the Mail for which  
you sent stamp.

Cities reported:  
Portsmouth, NH 1917<sup>ASW</sup>

This is the Mail for which  
you sent postage.

Ogden, UT 1908<sup>ASW</sup>

This is the article for which  
you sent postage.

Cities reported:  
Jacksboro, Florida 1926<sup>ASW</sup>

This is the mail for which  
you sent postage.

Cities reported:  
Minneapolis, MN 1908<sup>ASW</sup>

**TMP1932** "This is the mail for which  
/ you sent postage."

This is the mail for which  
you sent postage.

Atlantic City, NJ 1932<sup>TB</sup>

This is the mail for which  
you sent postage.

Cities reported:  
Denver, CO 1909<sup>ASW</sup>  
Oshkosh, WI 1912<sup>ASW</sup>  
Seattle, WA 1912<sup>ASW</sup>

This is the mail for which  
you sent postage.

Cities reported:  
Toledo, OH 1941<sup>ASW</sup>

This is the mail for which  
you sent postage.

Cities reported:  
Kansa City, MO 1909<sup>ASW</sup>

This is the mail for which  
you sent postage.

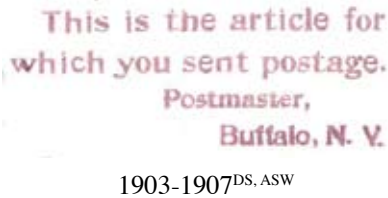
Cities reported:  
Wellington, KS 1910<sup>ASW</sup>  
San Francisco, CA 1912<sup>ASW</sup>  
Jacksonville, FL 1915<sup>ASW</sup>

This is the Mail For (TMP)  
Which You Sent Postage

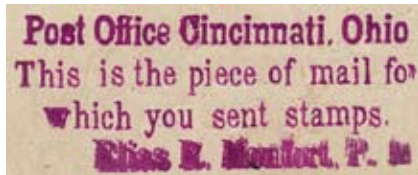
D. Markings unique to a particular city:

Postmasters may have acquired these locally, ordered them by mail, or in the case of large cities after 1909 had them custom-made by the Post Office Supply Division.

**Buffalo, NY**

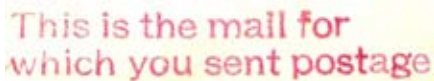


Cincinnati, Ohio

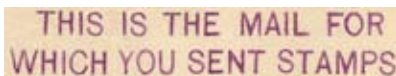


E. Generic markings used or probably used in multiple cities:

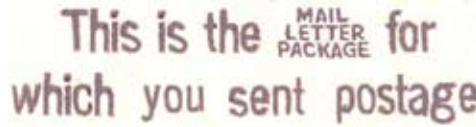
Postmasters may have ordered them by mail, or in the case of large cities after 1909 had them made by the Post Office Supply Division.



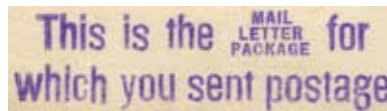
Cities reported: St. Louis, MO 1912<sup>DS</sup>



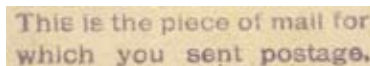
Cities reported:  
New Haven, CT 1906<sup>DS</sup>



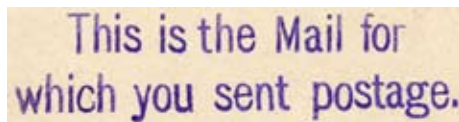
Cities reported:  
Goshen, IN 1904-6<sup>ASW</sup>  
Catskill, NY 1905<sup>DS</sup>  
Atlantic City, NJ 1906<sup>ASW</sup>  
Eloora, IA, 1907<sup>ASW</sup>  
Eugene, OR 1907<sup>DS</sup>  
Galveston, TX 1907<sup>ML</sup>  
Seattle, WA 1907<sup>ASW</sup>  
North adams, MA 1908<sup>ASW</sup>  
Salem, OR 1908-16<sup>ASW</sup>  
Columbus, OH 1909<sup>ASW</sup>  
Alliance, OH 1910<sup>ASW</sup>  
Hudson, NY 1912<sup>DS</sup>  
Hutchinson, KS 1913<sup>ASW</sup>



Cities reported:  
Dayton, OH 1905<sup>ASW</sup>  
Dalles, TX 1907<sup>ASW</sup>

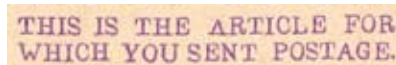


Cities reported:  
Concord, NH 1905<sup>ASW</sup>

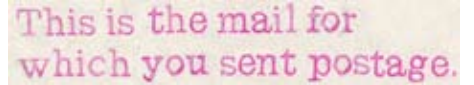


Cities reported:  
Oakland, CA 1907-13<sup>ASW</sup>  
Indianapolis, IN 1922<sup>DS, ASW</sup>

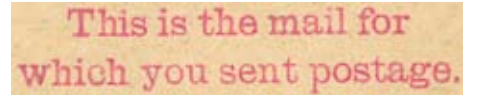
**TMP1910<sup>2</sup>** “THIS IS THE ARTICLE FOR / WHICH YOU SENT POSTAGE”



Cities reported:  
Marshall, MN 1910+/-<sup>TB</sup>



Cities reported:  
St. Louis, MO 1910<sup>ASW</sup>



Cities reported:  
Portland, OR 1910<sup>ASW</sup>

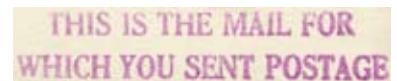


Cities reported:  
Los Angeles, CA 1928<sup>ASW</sup>  
St. Petersburg, FL 1942<sup>ASW</sup>  
McKeesport, PA 1940<sup>ASW</sup>  
Charleston, WV 1945<sup>ASW</sup>



Cities reported:  
Laconia, NH 1931<sup>ASW</sup>

**TMP1938<sup>2</sup>** “THIS IS THE MAIL FOR/WHICH YOU SENT POSTAGE”



Cities reported:  
Salt Lake City, UT 1936<sup>ASW</sup>  
Washington, D.C.\* 1938<sup>TB</sup>  
Portland, OR 1938<sup>ASW</sup>  
Brooklyn, NY 1940<sup>TB</sup>  
Newark, NJ 1942<sup>TB</sup>  
Seattle, WA 1942<sup>ASW</sup>

**TMP1939<sup>2</sup> “THIS IS THE MAIL  
FOR/WHICH YOU SENT POSTAGE”**

THIS IS THE MAIL FOR  
WHICH YOU SENT POSTAGE

Cities reported:

New Orleans, LA 1936<sup>ASW</sup>  
San Francisco, CA 1936-7<sup>ML</sup>  
Plattsburg, NY 1939<sup>TB</sup>  
Flushing, NY 1940<sup>ASW</sup>  
Glencoe, NY 1940<sup>ASW</sup>  
Portland, OR 1940<sup>ASW</sup>  
Chicago, IL, 1940-6<sup>LP</sup>  
Tacoma, WA 1941<sup>ASW</sup>  
Brookville, OH 1942<sup>ASW</sup>  
Cincinnati, OH 1942<sup>ASW</sup>  
Providence, RI 1948<sup>TB</sup>  
Grand Lake, CO 1955<sup>ASW</sup>  
Claremont, NH 1955<sup>ASW</sup>  
Akron, OH 1956<sup>ASW</sup>  
Washington, DC 1956<sup>ASW</sup>  
Bangor, ME 1957<sup>ASW</sup>

THIS IS THE MAIL FOR  
WHICH YOU SENT POSTAGE

Skowhegan, ME 1938<sup>ASW</sup>

**This is the piece of mail for  
which you sent postage**

Chicago, IL 1947<sup>LP</sup>

**TMP1952<sup>2</sup> “THIS IS THE MAIL  
FOR/WHICH YOU SENT POSTAGE”**

THIS IS THE MAIL FOR  
WHICH YOU SENT POSTAGE

Naugatuck, CT 1937<sup>ASW</sup>  
Harrisburg, PA 1952<sup>TB</sup>

**TMP1954<sup>2</sup> “THIS IS THE MAIL  
FOR/WHICH YOU SENT POSTAGE”**

THIS IS THE MAIL FOR  
WHICH YOU SENT POSTAGE

Mechanic Falls, ME 1954<sup>TB</sup>

This is the Mail (TMP)  
For Which You Sent Postage

E. Generic markings used or probably used in multiple cities:

Postmasters may have ordered them by mail, or in the case of large cities after 1909 had them made by the Post Office Supply Division.

*This is the Mail  
for which you sent  
postage.*

Cities reported: Oakland, CA 1889<sup>DS</sup>

*This is the piece of mail for  
which you sent postage.*

Cities reported:  
Concord, NH 1905<sup>ASW</sup>

**THIS IS THE PIECE OF MAIL  
FOR WHICH YOU SENT POSTAGE.**

Cities reported:  
Chicago, 1907-1915<sup>LP</sup>

*This is the mail (letter)  
(package) for which you  
sent postage.*

Cities reported:  
Omaha, NE 1907-10<sup>ASW</sup>  
Urbana, IL 1911<sup>DS</sup>

*This is the Piece of Mail  
Matter for which you  
sent Postage.*

Wallawalla, WA 1911<sup>ASW</sup>

**THIS IS THE MAIL  
FOR WHICH YOU SENT POSTAGE**

Cities reported:  
Harrisburg, PA 1913<sup>ASW</sup>  
New Haven, Conn 1914<sup>ASW</sup>  
Providence, RI 1916<sup>DS</sup>  
Chicago, IL 1917-20<sup>LP</sup>

**THIS IS THE MAIL  
FOR WHICH YOU SENT POSTAGE**

Binghamton, NY 1916<sup>ASW</sup>

**THIS IS THE MAIL  
FOR WHICH YOU SENT POSTAGE**

Cities reported:  
Colorado Springs, CO 1917<sup>ASW</sup>

**THIS IS THE MAIL  
FOR WHICH YOU SENT POSTAGE**

Cities reported:  
Pittsburgh, PA 1917<sup>ASW</sup>  
Syracuse, NY 1918<sup>ASW</sup>

**THIS IS THE MAIL  
FOR WHICH YOU SENT POSTAGE**

Cities reported:  
Norfolk, VA 1920<sup>ASW</sup>  
Hammond, IN 1927<sup>ASW</sup>  
Corvallis, OR 1949<sup>ASW</sup>  
Harrisburg, PA 1952<sup>ASW</sup>

**THIS IS THE MAIL  
FOR WHICH YOU SENT POSTAGE**

Cities reported:  
Harrisburg, PA 1922<sup>ASW</sup>  
Commerce, TX 1932<sup>ML</sup>

**THIS IS THE MAIL  
FOR WHICH YOU SENT POSTAGE.**

Cities reported:  
Chicago, IL 1923-33<sup>LP</sup>  
Portland, OR 1926<sup>ASW</sup>  
St Augustine, FL 1936<sup>DS</sup>  
New Haven, CT 1937<sup>ASW</sup>  
Raleigh, NC 1941<sup>ASW</sup>  
Pasadena, CA 1941<sup>ASW</sup>  
Los Angeles, CA 1949<sup>ASW</sup>  
Inglewood, CA 1949<sup>ASW</sup>  
Vineland, NJ 1953<sup>ASW</sup>

**THIS IS THE MAIL  
FOR WHICH YOU SENT POSTAGE.**

Cities reported:  
Fort wayne, IN 1924<sup>ASW</sup>  
Peoria, IL 1942<sup>ASW</sup>

*This is the mail  
for which you sent postage*

Rochester, NY 1924<sup>TB</sup>

**THIS IS THE MAIL  
FOR WHICH YOU SENT POSTAGE**

Cities reported:  
Salt lake City, UT 1925<sup>ASW</sup>  
Gettsburg, PA 1928<sup>ASW</sup>  
Springfield, IL 1933<sup>ASW</sup>  
Washburn, WI 1935<sup>ASW</sup>  
Los Angeles, CA 1937<sup>ASW</sup>  
San Francisco, CA 1937<sup>ASW</sup>

**THIS IS THE MAIL  
FOR WHICH YOU SENT POSTAGE.**

Cities reported:  
Denver, CO 1929

**THIS IS THE MAIL  
FOR WHICH YOU SENT POSTAGE**

Cities reported:  
Lawrence, MA 1930<sup>ASW</sup>  
Camp Curry, CA 1937<sup>ASW</sup>

**THIS IS THE MAIL  
FOR WHICH YOU SENT POSTAGE**

Cities reported:  
Whitefield, NH 1934<sup>ASW</sup>

**THIS IS THE MAIL  
FOR WHICH YOU SENT POSTAGE.**

Cities reported:  
New Haven, Conn. 1937<sup>ASW</sup>

**THIS IS THE MAIL  
FOR WHICH YOU SENT POSTAGE**

Cities reported:  
Amsterdam, NY 1942<sup>ASW</sup>

This is the Mail For (TMP)  
Which You Sent Postage - Misc

E. Generic markings used or probably used in multiple cities:

Postmasters may have ordered them by mail, or in the case of large cities after 1909 had them made by the Post Office Supply Division.

This is the mail matter for which you sent stamps

Syracuse, NY 1903<sup>ASW</sup>

This is the Mail for which you sent postage on.....

Chicago, IL 1904<sup>ASW</sup>

This is the package you sent postage stamps

Omaha, NE 1905<sup>ASW</sup>

This is the mail matter for which you sent postage.

Saratoga, NY 1906<sup>ASW</sup>

**TMP1906<sup>2</sup>** “This is the mail for which you sent postage” [Other auxiliary mark on cover: “Unmailable as a Post Card / Due 1 cent as a postage”]

This is the mail for which you sent postage .

Washington, D.C. 1906-8<sup>TB</sup>

THIS IS THE PACKAGE FOR WHICH YOU SENT POSTAGE

El Paso, TX 1924<sup>ASW</sup>

Mail for which Postage was sent El Paso, Texas

El Paso, TX 1924<sup>ASW</sup>

**Originally Held For Postage (OHP)**

**C. Stock Markings, source not yet known:**

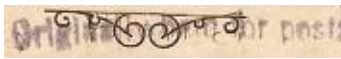
“Originally held for postage, but now / forwarded upon receipt of postage due.” (Milgram cover #15)  
Cities reported: Boston, MA 1899

**D. Markings unique to a particular city:**  
Postmasters may have acquired these locally, ordered them by mail, or in the case of large cities after 1909 had them custom-made by the Post Office Supply Division.

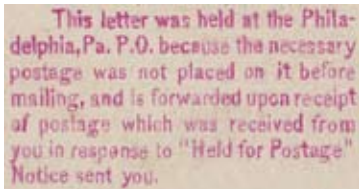
**Lakewood, NJ**

“Originally held for Postage and / Forwarded on Receipt of Stamps / L.N.J.P.O.” used in 1905 (Milgram cover #18)

**OHP1906<sup>2</sup> “Originally held for postage”**

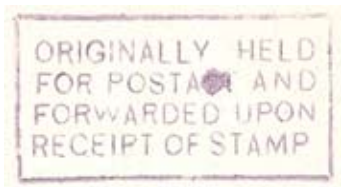


Jersey City, NJ 1906<sup>TB</sup>



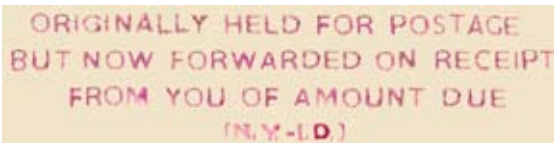
Philadelphia, PA 1907<sup>ASW</sup>

**OHP1907<sup>2</sup> “FORWARDED UPON/ RECEIPT OF STAMP”**



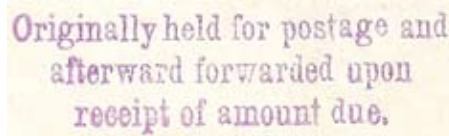
Newport, RI 1907<sup>TB</sup>

**New York, New York**



1899-1906 text reads “ORIGINALLY HELD FOR POSTAGE / BUT NOW FORWARDED ON RECEIPT / FROM YOU OF AMOUNT DUE / (N.Y. – I.D.).” from the Inquiry Division.<sup>ASW</sup>

**OHP1906<sup>2</sup> “Originally held for postage and / afterward forwarded upon / receipt of amount due.”**



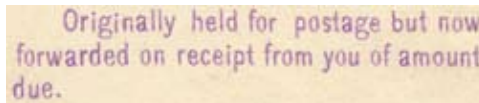
Highpoint, NC 1906<sup>TB</sup>

**E. Generic markings used or probably used in multiple cities:**

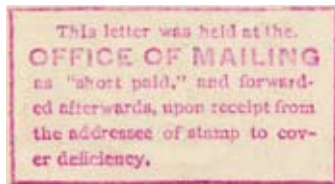
Postmasters may have ordered them by mail, or in the case of large cities after 1909 had them made by the Post Office Supply Division.



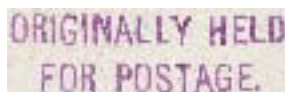
(Label) Cities reported: Bloomington, IN 1890<sup>ASW</sup>



Fort Wayne, IN 1905<sup>ASW</sup>



(Handstamp) Cities reported: Plymouth, NH 1906<sup>ASW</sup>



Cities reported: Rutland, MA 1907<sup>ASW</sup>

**Postage Subsequently Paid (PSP) by Addressee**

**POSTAGE SUBSEQUENTLY PAID BY ADDRESSEE.**

Chicago, IL 1883-1887<sup>LP</sup>

**I.D. POSTAGE SUBSEQUENTLY PAID BY ADDRESSEE**

Chicago, IL 1890<sup>LP</sup>

## Postage Subsequently Paid (PSP) by Writer

The sender marking changes text with each edition of the supply catalog. While I have not seen an example of the 1909 or 1923 markings, I expect them to resemble:

Postage subsequently paid by writer.

In the 1914 and 1932 catalogs the text was:<sup>NAS</sup>

**Postage subsequently paid  
by sender**

I believe this marking was intended for use with Form 3540 requesting the sender of non-first class mail to supply postage so that their undeliverable mail could be forwarded, or returned to them. (Only first class mail has the return included in the original postage.)

E. Generic markings used or probably used in multiple cities:

Postmasters may have ordered them by mail, or in the case of large cities after 1909 had them made by the Post Office Supply Division.

Postage subsequently paid  
by writer.

Cities reported:  
Manchester, MA 1907<sup>ASW</sup>

Postage subsequently  
paid by sender

Cities reported:  
Mckeesport, PA 1911<sup>ASW</sup>

Postage subsequently paid  
by writer

Cities reported:  
Washington, DC 1932<sup>ASW</sup>

Postage subsequently paid  
by sender

Cities reported:  
Hempstead, NY 1941<sup>ASW</sup>

Postage subsequently paid  
by sender.

Cities reported:  
Chicago, IL 1935<sup>ASW</sup>  
Salem, MS 1941<sup>ASW</sup>

**PSP1942<sup>2</sup>** “POSTAGE SUBSEQUENTLY/PAID BY SENDER” [Other auxiliary marks on cover: “Postage Due” and “sender notified”]

POSTAGE SUBSEQUENTLY  
PAID BY SENDER

Cities reported:  
Glendale, CA 1942<sup>TB</sup>

**Postage subsequently paid  
by sender**

Chicago, IL, 1931-41<sup>LP</sup>

**Postage subsequently paid  
by writer.**

Chicago, IL, 1940<sup>LP</sup>

**Postage subsequently  
paid by writer**

Chicago, IL, 1952<sup>LP</sup>

## Forwarded on Receipt of Postage (FUR)

Wilmington, Del

Forwarded from Wilmington, Del.  
Post Office on receipt of postage.

1906<sup>ASW</sup>

**New York, New York**

FORWARDED UPON RECEIPT  
OF POSTAGE DUE.  
(N. Y. P. O. I. D.)

1909<sup>ASW</sup>

Forwarded Upon Receipt of  
Postage Due N. Y. P. O. -I. S.

1935-58 <sup>DS, ASW</sup>

Forwarded Upon Receipt of  
Postage Due N.Y. P. O. -I.D.

1935-37, with initials for various  
divisions.<sup>DS, ASW</sup>

E. Generic markings used or probably used in multiple cities:

Postmasters may have ordered them by mail, or in the case of large cities after 1909 had them made by the Post Office Supply Division.

**FUR1903<sup>2</sup>** “This letter was mailed / with out postage but is / now forwarded upon re- / ceipt of postage (in box)”

This letter was mailed  
without postage but is  
now forwarded on re-  
ceipt of stamp.

Washington, DC 1903-6<sup>ASW, TB</sup>

Forwarded on receipt  
of postage due.

Cities reported:  
Camden, NJ 1906<sup>ASW</sup>  
Boston, MA 1907<sup>ASW</sup>

Forwarded on receipt  
of postage due.

Washington, D.C. 1907<sup>ASW</sup>

Forwarded on receipt of  
Postage from addressee

Brooklyn, NY 1914<sup>ASW</sup>

**FUR1907<sup>2</sup>** "Forwarded on receipt of  
stamp."

Forwarded on receipt of stamp.

Patchogue, NY 1907<sup>TB</sup>

## II. Notice of Detention

Sources for these markings are not known. I have not yet found them in an advertisement from a private firm. While the text is not listed as one of the stock markings in the 1909-1932 Post Office supply catalogs, larger post offices were allowed to order customized markings. Most examples appear to be variations of the opera glass style used for postage due markings. Only one stock marking has been reported, all of the others include the name of a city.

NOTICE SENT  
AUG 14 1899

Cities reported: Chicago, 1899<sup>LP</sup>

Chicago, Illinois<sup>LP</sup>



1883-1895 with minor changes in the text and font.

NOTICE SENT  
AUG 14 1899

Sent notice of Detention,  
CHICAGO, ILL.  
MAR 6 1900

SENT NOTICE OF DETENTION  
SEP 10 1903  
CHICAGO, ILL.

SENT NOTICE OF DETENTION  
JUL 26 1907  
CHICAGO, ILL.

New York, New York



1886-1906 with minor changes in the text and font.<sup>ASW</sup>

Oakland, California



1889<sup>DS</sup>

Sent notice of detention.

Cities reported:  
Detroit, MI 1908-9<sup>ASW</sup>